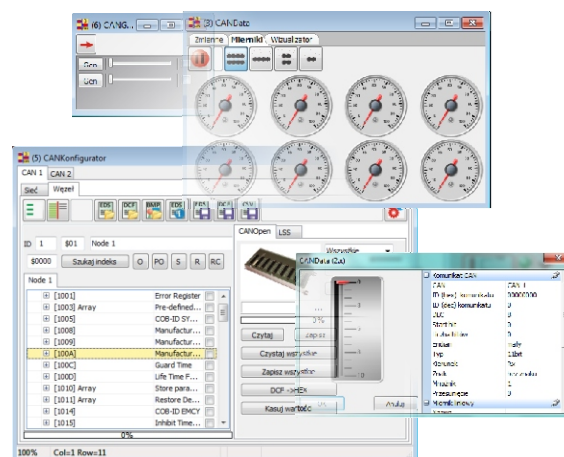
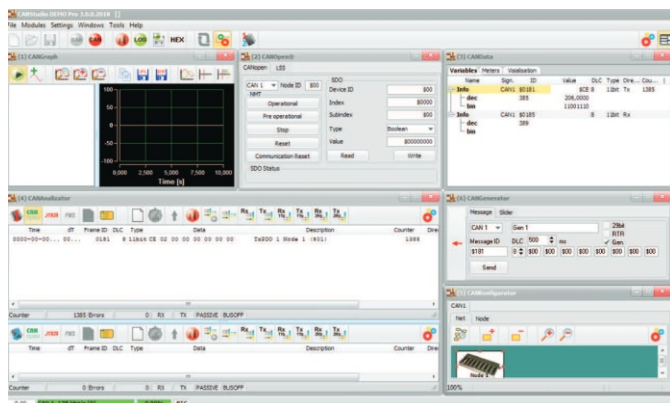


# CANstudio 3

## CAN Software Tool



USB

CAN

CAN

### INFORMACJE O DZIAŁALNOŚCI

CANStudio is advanced software tool for designers, integrators and service man for devices and network based on CAN technology. It is cooperating with CAN/USB CRUSB converter. It allows to configure devices with CAN interface and specially CANopen® protocol, and also based on LSS service. It allows to build multi nodes network and save it on disk. Monitoring the network is very easy when using view windows for incoming CAN frames, numeric display and graph. User can influence for CAN network using generators and predefined control commands according to CANopen® specification.

### FEATURES

- automatic CAN baudrate detection
- automatic CANopen® node search
- setting non-typical CAN baudrates and bit timing parameters
- listen mode operation
- CAN frame generating
- SYNC frame generating
- sending list of CAN frames from file or defined list
- displaying CAN telegrams in the table or chronological
- file storing (logging)
- receive and transmit CAN frame filter
- CANopen®, J1939 frames interpretation
- Trend graphical values presentation
- numeric gauge value presentation
- saving graph trends in BMP or JPG files
- EDS and DCF files saving
- CANopen® network project building
- LSS support
- NMT and SDO frames manage
- Updating CANstudio via website
- supported languages :Polish, English and German
- possibilities to define user language

# CANstudio 3

## SYSTEM REQUIREMENTS

Operation system	Windows® XP/Vista™/7/8/10.
------------------	----------------------------

## ORDERING INFORMATION

**CS.PRO** - CANStudio Pro

## ACCESSORIES

- **CRUSB Spartan**  
KONWERTER CAN/USB

## COMPANY INFORMATION

DIGA s.c. Jacek Barcik, Gabriela Barcik  
Ul. Zamkowa 1  
PL 44-109 Gliwice

Tel. : +48 32 234-56-73

Fax : +48 32 234-56-73

E-mail: [info@diga.biz.pl](mailto:info@diga.biz.pl)

**[www.diga.biz.pl](http://www.diga.biz.pl)**